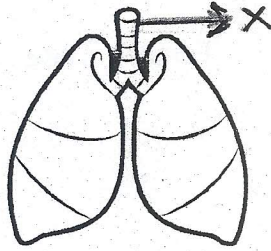


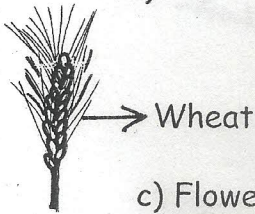
Name _____

- How many bones are there in an adult human body ?
a) 106 b) 226 c) 306 d) 206
- Which instrument is used to measure the speed of a vehicle ?
a) Speedometer b) Lactometer c) Voltmeter d) Electrometer
- Which animal changes its colour ?
a) Giraffe b) Lion c) Chameleon d) Tiger
- What is associated with lava ?
a) Earthquake b) Tsunami c) Flood d) Volcano
- Which of these travel through " X " before it reaches the lungs ?



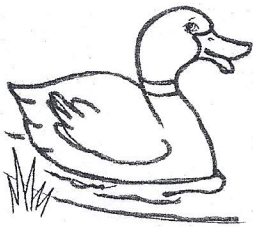
- a) Water b) Food c) Air d) Blood

6. Which part of this plant is eaten by us



- a) Stem b) Root c) Flower d) Seeds

7. Andy went to the zoo and noticed a water bird. Pick the bird that Andy most likely saw



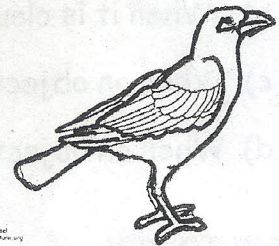
a) Duck



b) Parrot



c) Eagle



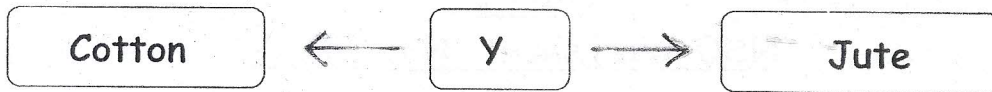
d) Mynah

8. Identify the fruit that is described in the box given below :

It is round. It tastes sour. It has a green skin.

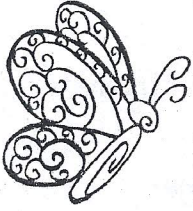
- a) Lime b) Kiwi c) Papaya d) Pumpkin

9. Identify "Y" in the given figure :

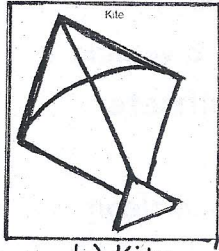


- a) Animal fibre b) Plant fibre c) Chemical fibre d) Both (a) & (b)

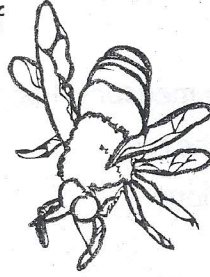
10. Which of these cannot move by itself



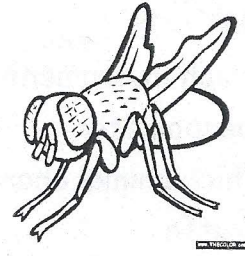
a) Butterfly



b) Kite

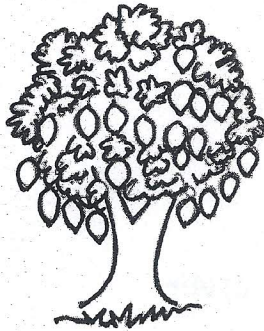


c) Honeybee



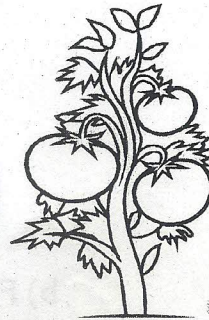
d) Housefly

11. What are the similarities between the plants shown below :



Mango Tree

Tomato Tree



- a) They bear flowers b) They prepare their own food
c) They reproduce seeds d) All of the above

12. When does a shadow form ?

- a) When an object is in the dark
b) When it is cloudy
c) When an object is placed in front of the source of light
d) When an object is placed far away from the source of light