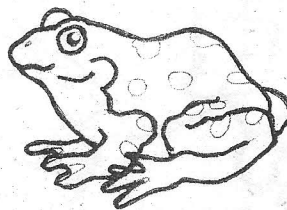


Name _____

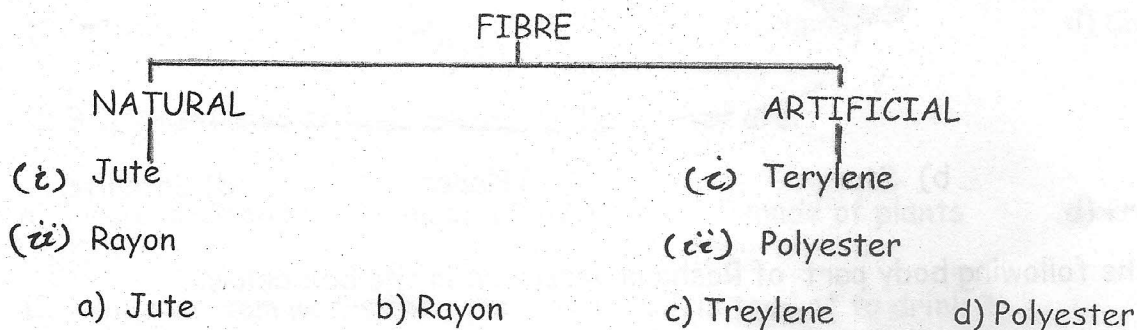
1. The figure below shows an organism:



How does the organism breathe:

- a) It uses its lungs only.
- b) It uses its gills only
- c) It uses its skin only
- d) It uses its skin and lungs.

2. Which of the following material is grouped wrongly in the chart below :



3. Which of the following is safety measure to avoid accidents ?

- a) Wearing nylon clothes while cooking
- b) Playing with fier crackers
- c) Getting down from a moving bus
- d) Turn off the valve of the gas cylinder.

4) Which of the following organs are protected by the rib cage ?

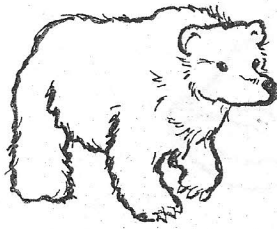
- P - Heart
- Q - Large Intestine
- R - Brain
- S - Lungs

- a) P and Q b) Q and R c) P and S d) P and R

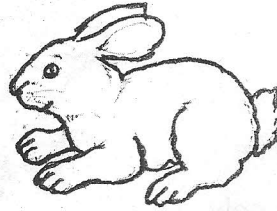
5. Identify the Omnivore



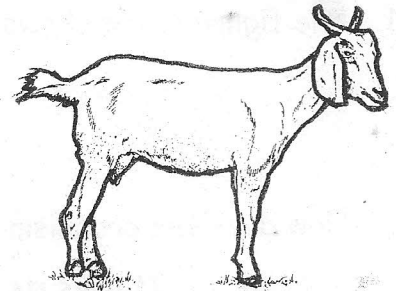
a) deer



b) bear

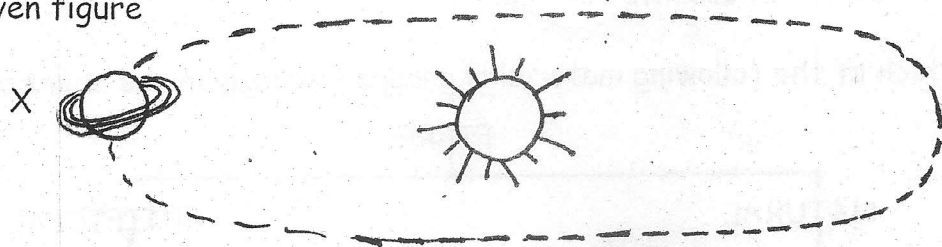


c) rabbit



d) goat

6. Identify "X" in the given figure



a) Moon

b) Star

c) Planet

d) Satellite

7. Which of the following body part of Rasha is described in the box below:

- It does not have any bones
- Rasha can control how it moves
- It moves when Rasha talks

a) finger

b) foot

c) neck

d) tongue

8. Identify the correct sequence in the increasing order of the size of the Earth, moon, and the Sun

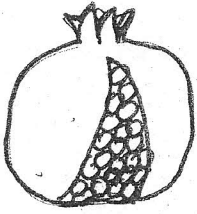
a) The Sun ----- The Moon----- The Earth

b) The Moon-----The Sun----- The Earth

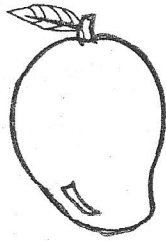
c) The Earth----- The Moon----- The Sun

d) The Moon----- The Earth----- The Sun

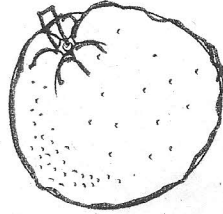
9. Which fruit seeds eaten by us are rich in vitamins and minerals ?



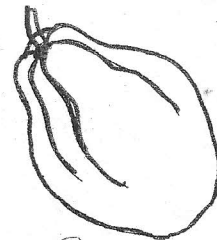
a) pomegranate



b) mango



c) orange



Papaya

d) papaya

10. Who am I ?

I help in making ropes and mats.

a) Groundnut

b) Coconut

c) Soapnut

d) Cashewnut

11. Bricks are used to build houses because they are:

a) hard and strong

b) made of wood

c) made of plants

d) free from germs

12. Which system warns the person that milk is too hot to drink ?

a) Circulatory system

b) Nervous system

c) Muscular System

d) Digestive system